

**RESOLUTION
BOARD OF COUNTY COMMISSIONERS
OURAY COUNTY**

**Re: Resolution to Amend Resolution 2004-055 to Provide Authority for
Cornerstone Metropolitan District Nos. 1 and 2 to Reconfigure Their Internal Boundaries**

WHEREAS, on November 1, 2004 the Ouray County Board of County Commissioners ("Board") adopted Resolution 2004-055 approving the Consolidated Service Plan for Cornerstone Metropolitan District Nos. 1 and 2 ("Districts"); and approving an Intergovernmental Agreement between the Districts, Ouray County, and Montrose County (the "IGA"); and

WHEREAS, pursuant to Section V.A.4 of the Service Plan and Paragraph 4 of the IGA, the Districts are required to obtain written approval from both Montrose and Ouray Counties prior to excluding any property from their boundaries; and

WHEREAS, the Districts have requested from the Board the written approval contemplated by the Service Plan and IGA to exclude property from their boundaries in order to properly reconfigure their internal boundaries; and

WHEREAS, the Board has been advised of the particulars of the Districts' request; and

WHEREAS, the Board is ready to take action concerning this matter;

NOW THEREFORE, it is hereby **RESOLVED** by the Board of County Commissioners of Ouray County, Colorado as follows:

1. The Board has determined that all parties intended that the two Districts be reconfigured from their current state, via the exclusion of property from the boundaries of each respective District, to those boundaries shown and described in **Exhibit A**, such exhibit being attached hereto and incorporated hereby.
2. The Board hereby approves, as required by Section V.A.4 of the Service Plan and Paragraph 4 of the IGA, the Districts' request to reconfigure their internal boundaries from their current state, via the exclusion of property from the boundaries of each respective District, to those boundaries shown and described in **Exhibit A**.
3. This Resolution shall be recorded in the Ouray County Clerk and Recorder's office.
4. All other provisions and exhibits contained in Resolution 2004-055, to the extent that they are consistent with this Resolution, shall remain in effect.

Adopted this 7th day of November, 2005.

BOARD OF COUNTY COMMISSIONERS
OF OURAY COUNTY, COLORADO

Don Batchelder, Chair

Michelle Nauer, Clerk and Recorder

Heidi M. Albritton, Vice-Chair

By: _____

Linda Munson-Haley,
Deputy Clerk of the Board

Kristi R. Westfall, Member

EXHIBIT A

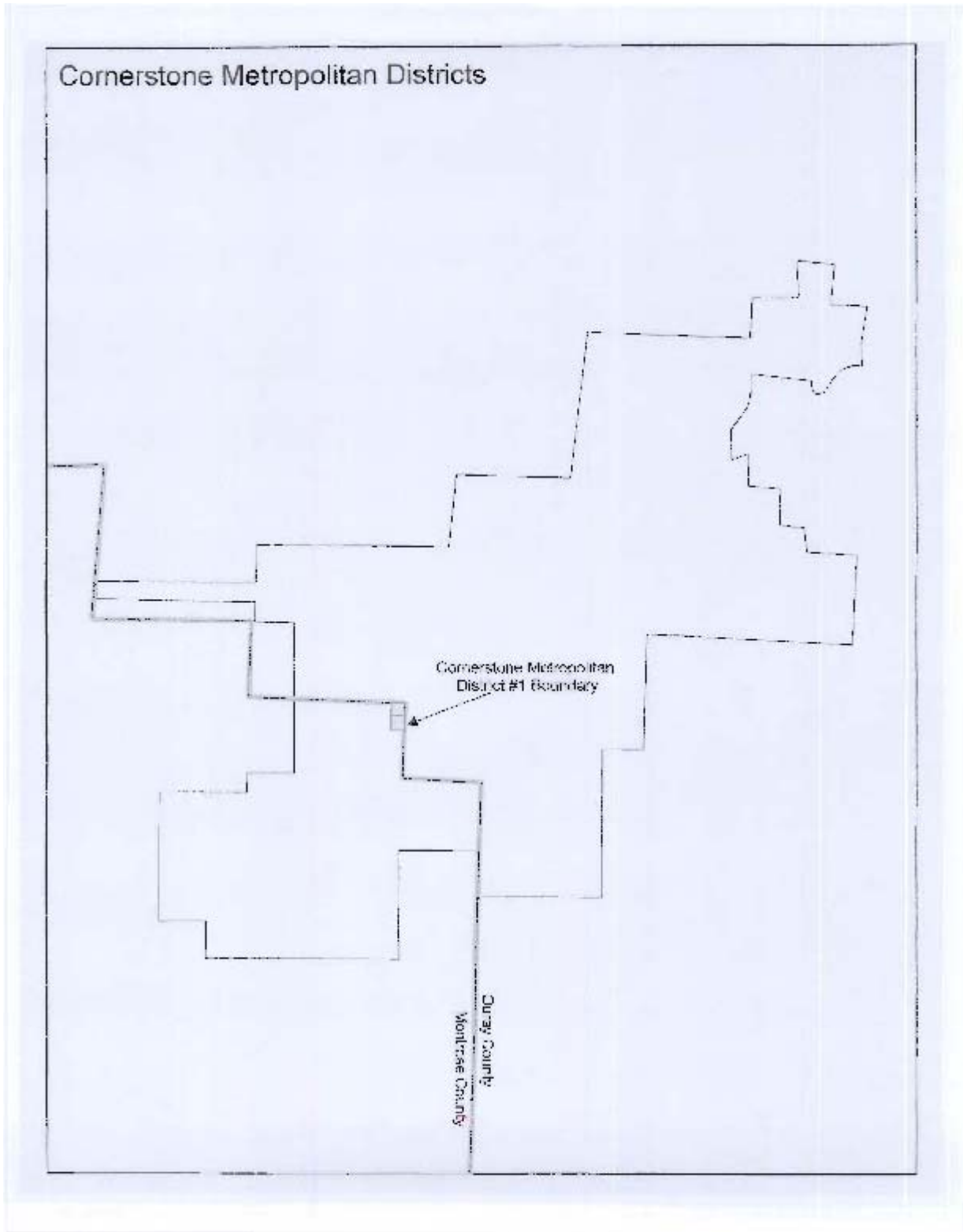
Legal Descriptions and Maps of the Districts' Reconfigured Boundaries

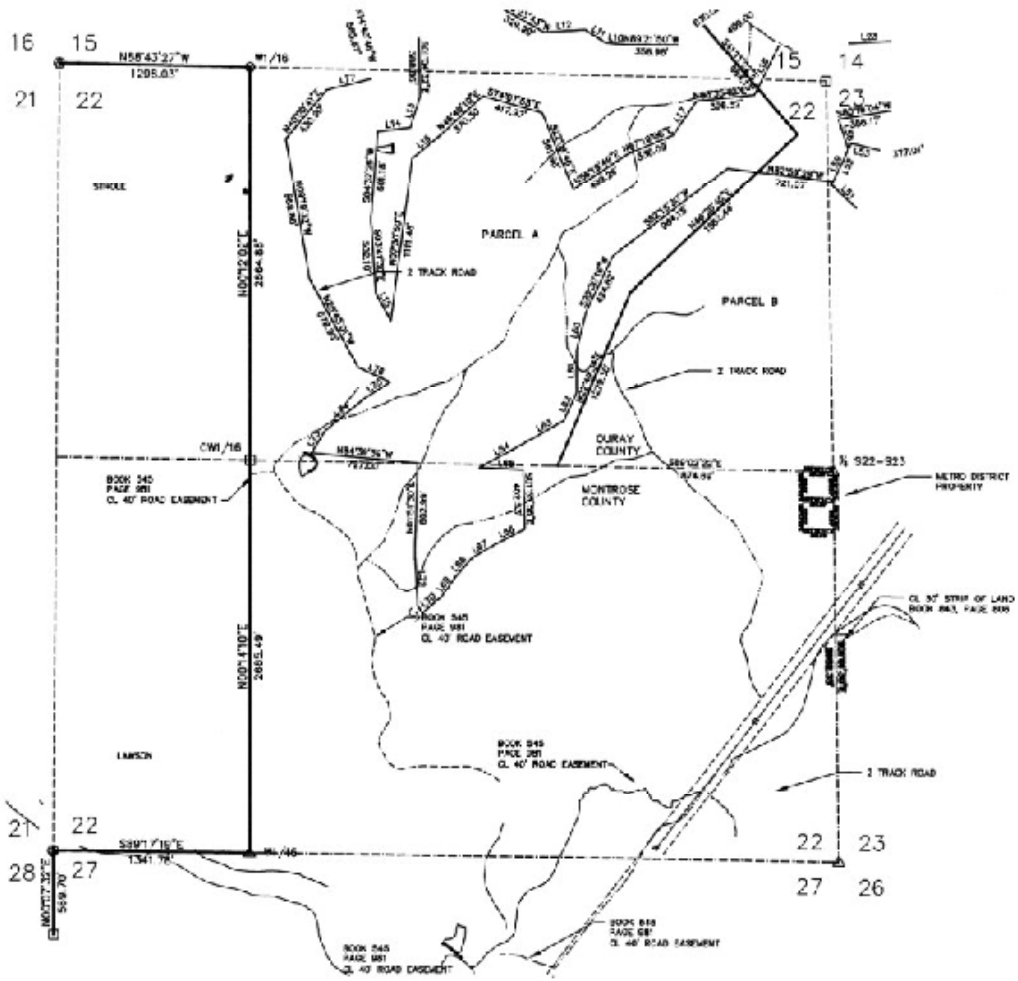
Boundaries of District No. 1

PROPERTY DESCRIPTION FOR A 1 ACRE PARCEL, A PARCEL OF LAND SITUATED IN SECTION 22, TOWNSHIP 46 NORTH, RANGE 10 WEST, NEW MEXICO PRINCIPAL MERIDIAN, COUNTY OF MONTROSE, STATE OF COLORADO, MORE PARTICULARLY DESCRIBED AS FOLLOWS:

BEGINNING at the 1/4 Corner common to of said Section 22 and Section 23 Township 46 North, Range 10 West, New Mexico Principal Meridian rebar and cap (3657) on the Montrose and Ouray County Line; thence along said county line S01°01'30"E a distance of 208.83' to a rebar and cap (PLS 33645); thence leaving said county line N89°02'44"W a distance of 208.83' to a rebar and cap (PLS 33645); thence N00°57'23"W a distance of 208.83' to said county line; thence along said county line S89°02'44"E a distance of 208.58' to the point of beginning, having an area of 1.000 acres MORE OR LESS.

Maps of District No. 1





Boundaries of District No. 2

PROPERTY DESCRIPTION FOR THE JVRE RANCH, A PARCEL OF LAND SITUATED IN SECTIONS 6, 7 & 18, TOWNSHIP 46 NORTH, RANGE 9 WEST, NEW MEXICO PRINCIPAL MERIDIAN AND IN SECTIONS 11, 12, 13, 14, 15, 16, 22, 23, 24, 25, 26, 27, 28, 33 & 34, TOWNSHIP 46 NORTH, RANGE 10 WEST, NEW MEXICO PRINCIPAL MERIDIAN, COUNTIES OF MONTROSE AND OURAY, STATE OF COLORADO, MORE PARTICULARLY DESCRIBED AS FOLLOWS:

BEGINNING at the section corner of Sections 1/2/11/12, a B.L.M. monument in place; thence N89°12'18"E along an existing fence line and the north section line of said Section 12 a distance of 2746.29' to the North 1/4 Corner of said Section 12, a rebar and cap (PLS 33645); thence continuing along said fence line and said north section line N89°11'31"E a distance of 2250.20' to a rebar and cap (PLS 33645) at a fence corner; thence leaving said section line and continuing along said fence line N66°24'02"E a distance of 493.30' to a rebar and cap (PLS 33645) at a fence corner; thence continuing along a north fence line N05°58'56"E a distance of 1070.01' to a rebar and cap (PLS 33645) at a fence corner; thence continuing along said fence line N88°48'42"E a distance of 1737.35' to a rebar and cap (PLS 33645) at a fence corner; thence N01°11'54"W a distance of 1294.89' to a rebar and cap (PLS 33645) at a fence corner; thence S87°04'47"E a distance of 903.00' to a rebar and cap (PLS 33645) at a fence corner; thence S60°08'08"E a distance of 130.18' to a rebar and cap (PLS 33645) at a fence corner; thence along a fence line S04°19'39"W a distance of 1282.06' to a rebar and cap (PLS 33645) at a point on an east/west fence line; thence S86°58'40"E a distance of 413.92' along said fence line to a rebar and cap (LS 12180); thence S87°02'03"E a distance of 871.67' to the SE 1/16 corner of said Section 6 monumented by a 20' witness corner to the north being a rebar and cap (LS 12180); thence S04°43'56"W a distance of 1344.40' to the E 1/16 a rebar and cap (LS 12180) of said Sections 6 & 7; thence S00°46'04"W a distance of 528.13' to a rebar and cap (PLS 33645); thence N86°13'07"W a distance of 634.67' to a rebar and cap (PLS 33645); thence S11°53'52"W a distance of 256.30' to a rebar and cap (PLS 33645); thence S15°29'04"W a distance of 351.31' to a rebar and cap (PLS 33645); thence S54°21'59"W a distance of 144.69' to a rebar and cap (PLS 33645); thence S46°57'56"W a distance of 281.52' to a rebar and cap (PLS 33645); thence N87°17'31"W a distance of 594.59' to a rebar and cap (PLS 33645); thence N84°37'51"W a distance of 2144.88' to a rebar and cap (PLS 33645); thence S03°37'27"E a distance of 584.93' to a rebar and cap (PLS 33645); thence S09°11'20"W a distance of 726.69' to 1/4 Corner of said Sections 12 & 7 a B.L.M. brass cap; thence N89°24'32"W a distance of 110.06' to a rebar and cap (PLS 33645); thence S27°21'30"W a distance of 980.20' to a rebar and cap (PLS 33645); thence S06°56'25"E a distance of 864.70' to a rebar and cap (PLS 33645); thence N66°27'55"E a distance of 482.62' to a rebar and cap (PLS 33645); thence S00°52'50"W a distance of 1137.01' along the west section line of said Section 7 to the corner of said Sections 12/7/13/18 a rebar and cap (LS 24299); thence S86°44'20"E a distance of 1257.57' to a rebar and cap (PLS 33645); thence S00°35'14"E a distance of 1190.93' to a rebar and cap (PLS 33645); thence S84°52'43"E a distance of 1022.57' to a rebar and cap (PLS 33645); thence S05°02'47"E a distance of 1051.40' to a rebar and cap (PLS 33645); thence S88°43'38"E a distance of 1558.36' to a rebar and cap (PLS 33645) on the E 1/16 line of said Section 18; thence along said E 1/16 line S00°39'24"E a distance of 1742.89' to the SE 1/16 of said Section 18 a rebar and cap (LS 24299); thence N87°16'18"W a distance of 4037.75' to the S 1/16 of said Sections 13 & 18 a rebar and cap (LS 24299); thence S89°37'13"W a distance of 2858.76' to the C-S 1/16 of said Section 13 a rebar and cap (LS 24299); thence S01°40'11"E a distance of 1342.78' to the 1/4 Corner of said Sections 13 & 24 a rebar and cap

(PLS 33645); thence S01°13'00"W a distance of 3964.36' to the C-S 1/16 of said Section 24 a rebar and cap (PLS 33645); thence N89°38'39"W a distance of 1351.52' to the SW 1/16 of said Section 24 a rebar and cap (PLS 33645); thence S00°33'38"W a distance of 1313.04' to the W 1/16 of said Sections 24 & 25 a rebar and cap (PLS 33645); thence S00°06'47"W a distance of 3980.20' to the SW 1/16 of said Section 25 a rebar and cap (PLS 33645); thence N87°50'12"W a distance of 1347.93' to the S 1/16 of said Sections 26 & 25 a rebar and cap (PLS 33645); thence S89°45'51"W a distance of 2671.04' to the C-S 1/16 of said Section 26 a rebar and cap (PLS 33645); thence N00°14'39"E a distance of 1330.02' to the Center 1/4 of said Section 26 a rebar and cap (PLS 33645); thence N89°53'45"W a distance of 2676.36' to the 1/4 Corner of said Sections 27 & 26 a rebar and cap (PLS 33645); thence S00°19'27"W a distance of 2688.32' to the section corner of said Sections 27/26/34/35 an alum. cap (LS 25643); thence S01°07'57"E a distance of 1348.35' to the N 1/16 of said Section 34 an alum. cap (LS 25643); thence N89°22'53"W a distance of 2673.32' to the CN 1/16 of said Section 34 a rebar and cap (LS 28652); thence N89°25'06"W a distance of 2684.77' to the N 1/16 of said Sections 33 & 34 a rebar and cap (LS 28652); thence S89°13'59"W a distance of 1336.08' to the NE 1/16 of said Section 33 a rebar and cap (LS 28652); thence N01°00'21"W a distance of 1338.34' to the E 1/16 of said Sections 28 & 33 a rebar and cap (LS 28652); thence along the south section line of said Section 28 S89°53'16"W a distance of 1333.94' to the 1/4 Corner of said Sections 28 & 33 a B.L.M. alum. cap; thence N00°09'26"E a distance of 4867.22' to a rebar and cap (LS 24299); thence along a fence line S89°38'22"E a distance of 2674.02' to a rebar and cap (LS 24299); thence along a fence line N00°07'32"E a distance of 569.70' to the section corner of said Sections 21/22/28/27 a B.L.M. brass cap; thence along the north line of said Section 27 S89°17'19"E a distance of 1341.78' to the W 1/16 of said Sections 22 & 27 a rebar and cap (LS 3657); thence N00°14'10"E a distance of 2665.49' to the CW 1/16 of said Section 22 a rebar and cap (LS 24299); thence N00°12'02"E a distance of 2664.88' to the W 1/16 of said Sections 15 & 22 a rebar and cap (LS 12180); thence N88°43'27"W a distance of 1298.03' to the Section Corner of said Sections 16/15/21/22 a B.L.M. brass cap; thence along the west line of said Section 15 N00°07'57"E a distance of 1049.61' to a rebar and cap (LS 24299); thence S89°06'44"W a distance of 5365.46' to a point on the west line of said Section 16 a rebar and cap (LS 24299); thence along the west line of said Section 16 N02°34'32"E a distance of 285.52' to the S 1/16 of said Section 16 a B.L.M. alum. cap; thence N89°08'03"E a distance of 5353.18' to S 1/16 of said Sections 16 & 15 a rebar and cap (LS 12180); thence N79°50'58"E a distance of 16.58' to a rebar and cap (PLS 33645) located at the intersection of the north/south & west fences; thence N00°15'35"W along the said north fence line a distance of 1330.65' to a rebar and cap (PLS 33645) at the intersection of the south & east fences; thence S88°32'09"E along said east fence line a distance of 5163.46' to a rebar and cap (PLS 33645) at an angle point in said east fence line; thence N86°15'56"E a distance of 1018.56' to a rebar and cap (PLS 33645) at an angle point in said east fence line; thence N43°09'55"E a distance of 434.73' to a rebar and cap (PLS 33645) at an angle point in said fence line; thence N01°26'22"E a distance of 2262.30' to a rebar and cap (PLS 33645) at the intersection of a south and east fence line; thence S89°43'35"E along said east fence line a distance of 3936.63' to a rebar and cap (PLS 33645) at an angle point in said fence line; thence N44°09'34"E a distance of 103.34' to a rebar and cap (PLS 33645) at an angle point in said fence line; thence N02°32'24"E along a north fence line distance of 2445.48' to a rebar and cap (PLS 33645) at an angle point in said fence line; thence N05°26'45"E a distance of 2685.41' to section corner of said Sections 1/2/11/12; which is the point of beginning, having an area of 5848.237 acres MORE OR LESS.

SAVE AND EXCEPT:

The 30 foot strip of land described in Deed recorded in Book 532, Page 234, and Reception No. 375428, Montrose County, Colorado.

SAVE AND EXCEPT:

BEGINNING at the 1/4 Corner common to of said Section 22 and Section 23 Township 46 North, Range 10 West, New Mexico Principal Meridian rebar and cap (3657) on the Montrose and Ouray County Line; thence along said county line S01°01'30"E a distance of 208.83' to a rebar and cap (PLS 33645); thence leaving said county line N89°02'44"W a distance of 208.83' to a rebar and cap (PLS 33645); thence N00°57'23"W a distance of 208.83' to said county line; thence along said county line S89°02'44"E a distance of 208.58' to the point of beginning, having an area of 1.000 acres MORE OR LESS.

