

**A RESOLUTION OF THE  
BOARD OF COUNTY COMMISSIONERS OF OURAY COUNTY, COLORADO  
REGARDING COMMISSIONER DISTRICTS IN OURAY COUNTY, COLORADO**

**WHEREAS**, C.R.S. §30-10-306 provides that commissioner districts “shall be as nearly equal in population as possible based on the most recent federal census of the United States”; and

**WHEREAS**, the current Ouray County commissioner districts have had basically the same boundary configurations for decades; and

**WHEREAS**, the most recent federal census was completed in the year 2000 and the total population of Ouray County has changed significantly since that time; and

**WHEREAS**, the next federal census will occur in the year 2010 and pursuant to C.R.S. §30-10-306(4), the Board is then required to establish, revise or alter the commissioner districts to assure that such districts shall be as nearly equal in population as possible based upon such census data; and

**WHEREAS**, pursuant to the provisions of C.R.S. §30-10-306, the establishment of commissioner districts shall only occur in odd-numbered years following the census; and

**WHEREAS**, the Board of County Commissioners of Ouray County, Colorado has tasked the Ouray County Clerk, the Ouray County Administrator, the Ouray County GIS Department and the Ouray County Attorney (“County Staff”) to review the boundaries of the existing commissioner districts in order to take into account the current population centers of Ouray County, *i.e.*, the City of Ouray, the Town of Ridgway and the northern portions of Ouray County including Log Hill Mesa and Colona, and recommend possible changes; and

**WHEREAS**, County Staff has found during their review that the Commissioner districts are not as “nearly equal in population” or number of active voters as possible; and

**WHEREAS**, the objective of the proposed redistricting is to provide a more effective representation of the citizens residing in the different population centers of Ouray County; and

**WHEREAS**, the attached map showing possible changes to commissioner districts is preliminary only and will be reviewed and modified in 2011 upon receipt of available new census data; and

**WHEREAS**, it is not intended that any changes to commissioner districts will affect currently sitting commissioners and any changes to commissioner district boundaries will only affect future commissioner candidates for office beginning in election year 2012; and

**NOW THEREFORE, BE IT RESOLVED BY THE BOARD OF COUNTY COMMISSIONERS OF OURAY COUNTY, COLORADO, AS FOLLOWS:**

1. That the preliminary map attached hereto is approved in concept and County Staff is directed to continue reviewing issues associated with the development of commissioner districts as required by C.R.S. § 30-10-306, with a final map to be approved in 2011. Prior to any final map being adopted and approved in 2011, notice to the public will be published advising of the proposed adoption

of new commissioner districts and the Board will hold a public hearing to obtain public input into the proposed new commissioner districts.

APPROVED AND ADOPTED THIS \_\_\_\_ DAY OF \_\_\_\_\_ 2009.

BOARD OF COUNTY COMMISSIONERS  
OF OURAY COUNTY, COLORADO

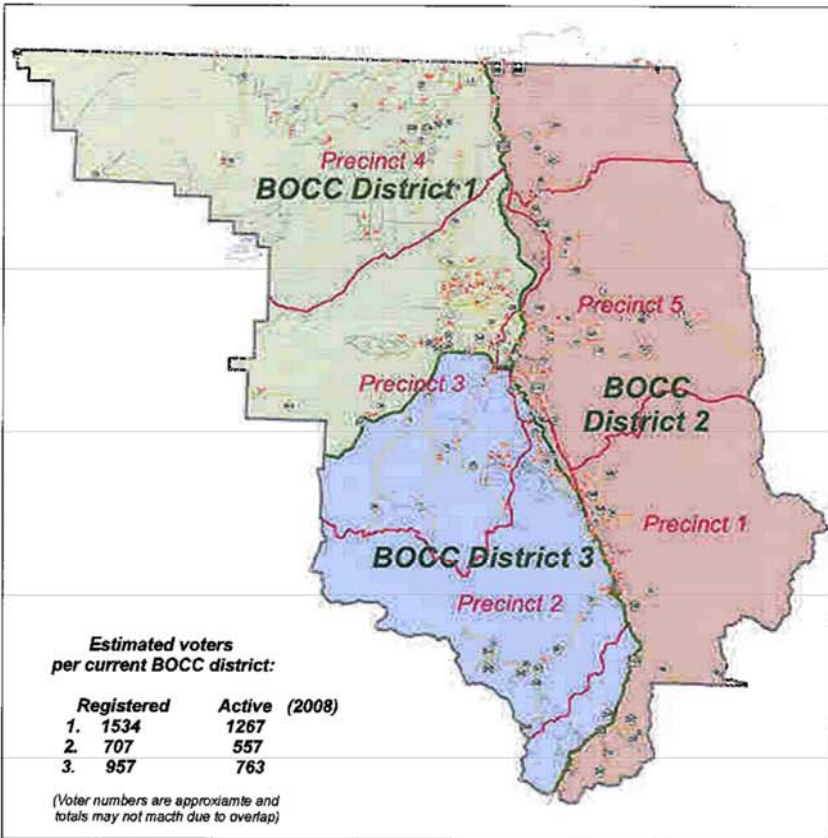
Attest:

\_\_\_\_\_  
Heidi M. Albritton, Chair

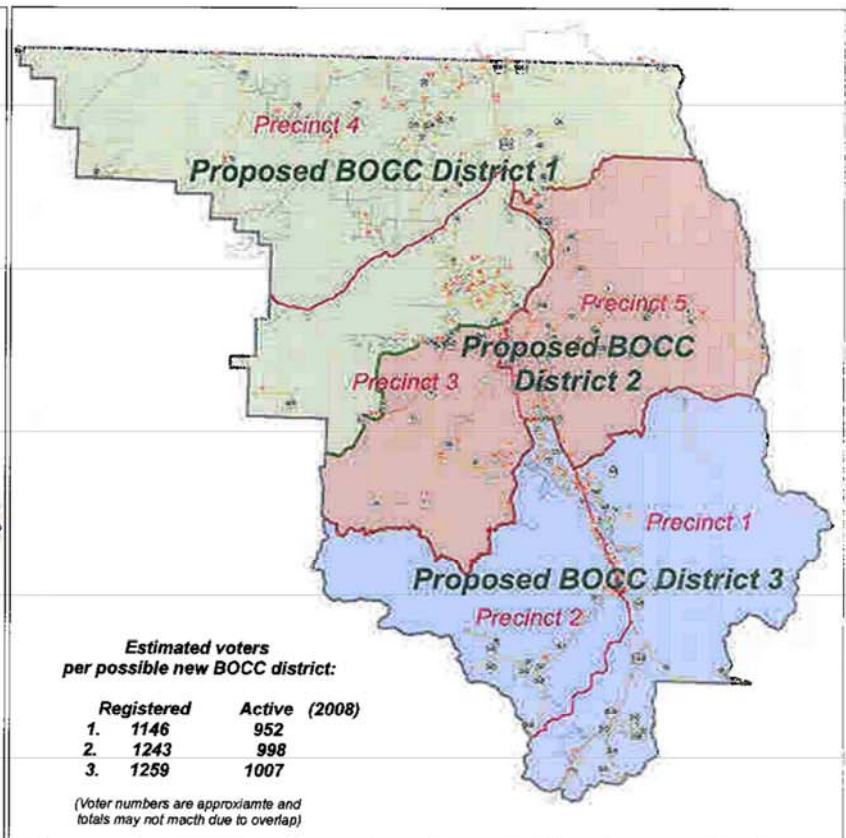
\_\_\_\_\_  
K. Keith Meinert, Vice-Chair

\_\_\_\_\_  
Michelle Nauer, Clerk and Recorder  
By: Linda Munson-Haley, Deputy Clerk of the Board

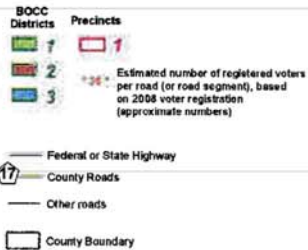
\_\_\_\_\_  
Lynn M. Padgett, Commissioner



**Existing BOCC District Boundaries**

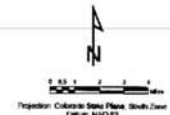


**Possible BOCC District Boundaries**



**Note: Voter registration numbers are provided as a reference to show approximate population distribution in the county as of 2009.**  
**Actual population distribution used for the final redistricting process will be based on 2010 census data.**

**Possible Changes to BOCC District Boundaries  
 Draft Map - April 28, 2009**



**OURAY COUNTY, COLORADO**